



PM Type
Motors

Reference Characteristics

Motor Size	PM30S — F48
Number of Steps per Rotation	48 (7.5° / Step)
Drive Method	2 — 2 PHASE
Drive Circuit	BIPOLAR CHOPPER
Drive Voltage	24 [V]
Current / Phase	500 [mA]
Coil Resistance / Phase	24.4 [Ω]
Drive IC	LB1847
Magnet Material	Polar anisotropy ferrite sintered magnet (MS50)
Insulation Resistance	100M [Ω] MIN
Dielectric Strength	AC 500 [V] 1 [min]
Class of Insulation	CLASS E
Operating Temp.	- 10 [°C] ~ 50 [°C]
Storage Temp.	- 30 [°C] ~ 80 [°C]
Operating Hum.	20 [%] RH ~ 90 [%] RH

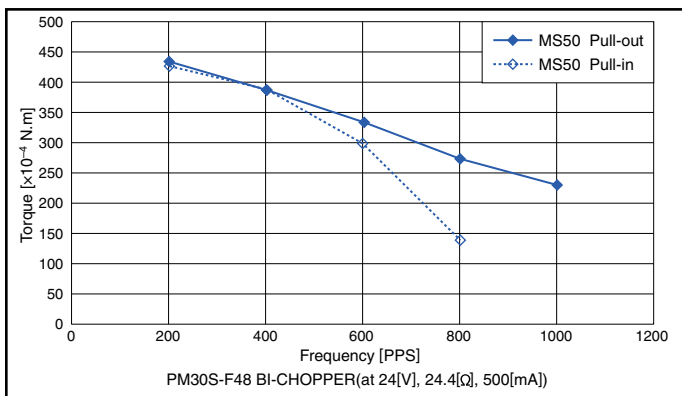
Applications

OA Equipment : Printers / Scanners

Industrial equipment : Flow control valves

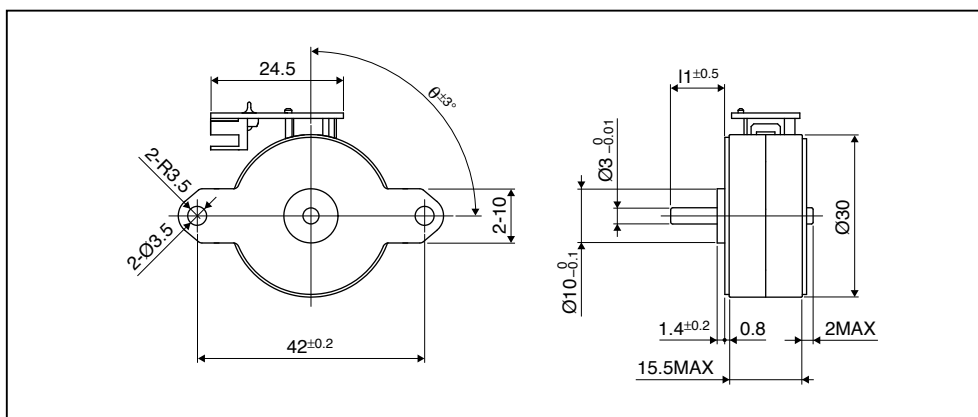
Home automation appliances : Sewing machines

Torque Characteristics



These torque values are reference only. Heat radiation conditions and temperature rise effect by duty are different on each equipment, therefore please select motors after considering the actual equipment.

Dimensions



Please contact our sales for inventory and lot information. Specification may be changed without notice.